



Making numbers work for you!

Dr. Marty Faldet

Where do we get our data?

- Feeding software – DMI, history of pen counts
- Management software – Cows milking, # in hospital
- Tank Information – lbs milk, components
- Milk check info – basis, premiums, deductions

Feeding software

- Stay vigilant –
 - DM's
 - Errors
 - Feeds, forages, locations
- Weighbacks –
 - How much?
 - What is the target amount per pen?
- Reports
 - DMI by pen summary across time
 - DMI by lactating

Who enters information?

- Herdsman
- Office help
- Consultant
- Owner

What are we monitoring and calculating?

- Milk and DMI
- 3.5% FCM
- 4.0% FCM
- Total fat and protein lbs
- Solids Corrected Milk (SCM)
- Cheese Yield
- Energy Corrected Milk (ECM)
- Money Corrected Milk (MCM)
- Feed Efficiency (FE)
- IOFC

Farm

Month:

May

Date	Milk ship	Cows milked	Not in	In Tank	Milk	PW 305 Avg	DMI	Fat	Pro	MUN	SCC	Comments
1	323,520	3518	65	3453	93.7	83.4	53.7	4.10	3.26	12.06	126	
2	268,360	3509	66	3443	77.9	82.4	54.5	4.29	3.30	12.04	137	
3	270,360	3541	69	3472	77.9	84.0	55.0	4.13	3.29	11.23	143	
27	275,900	3518	65	3453	79.9	84.3	54.6	4.19	3.29	11.19	136	
28	274,780	3512	67	3445	79.8	82.5	54.1	4.16	3.25	11.60	157	
29	329,200	3501	69	3432	95.9	82.9	54.9	4.19	3.25	11.69	156	
30	275,400	3510	70	3440	80.1	82.5	54.9	4.18	3.24	11.40	145	
31	275,800	3508	72	3,436	80.3	83.8	55.1	4.19	3.27	11.30	142	
AVG	287,881	3,502	67	3,434	83.8	83.9	55.1	4.15	3.27	11.47	141.6	

Total 8,924,300

Farm

Month:

May

Date	Milk ship	Cows milked	Not in	In Tank	Milk	PW 305 Avg	DMI	Fat	Pro	MUN	ECM	FE
1	323,520	3518	65	3453	93.7	83.4	53.7	4.10	3.26	12.06	92.0	1.71
2	268,360	3509	66	3443	77.9	82.4	54.5	4.29	3.30	12.04	93.2	1.71
3	270,360	3541	69	3472	77.9	84.0	55.0	4.13	3.29	11.23	93.2	1.69
27	275,900	3518	65	3453	79.9	84.3	54.6	4.19	3.29	11.19	94.2	1.72
28	274,780	3512	67	3445	79.8	82.5	54.1	4.16	3.25	11.60	91.6	1.69
29	329,200	3501	69	3432	95.9	82.9	54.9	4.19	3.25	11.69	92.3	1.68
30	275,400	3510	70	3440	80.1	82.5	54.9	4.18	3.24	11.40	91.7	1.67
31	275,800	3508	72	3,436	80.3	83.8	55.1	4.19	3.27	11.30	93.5	1.70
AVG	287,881	3,502	67	3,434	83.8	83.9	55.1	4.15	3.27	11.47	93.1	1.69

Total 8,924,300

Farm

Month:

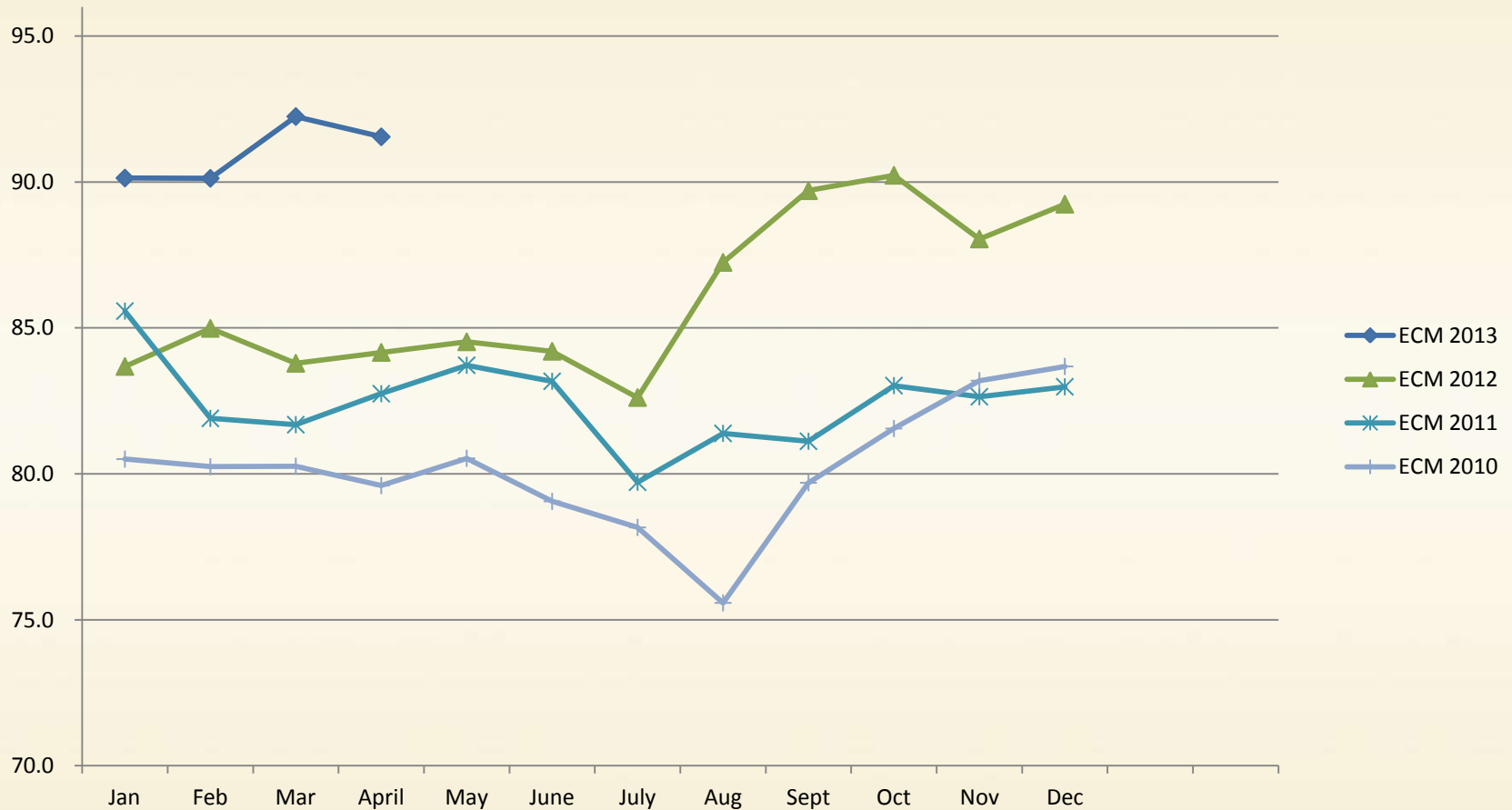
May

Date	Milk ship	Cows milked	Not in	In Tank	Milk	PW 305 Avg	DMI	Fat	Pro	ECM	FE	IOFC
1	323,520	3518	65	3453	93.7	83.4	53.7	4.10	3.26	92.0	1.71	10.40
2	268,360	3509	66	3443	77.9	82.4	54.5	4.29	3.30	93.2	1.71	10.42
3	270,360	3541	69	3472	77.9	84.0	55.0	4.13	3.29	93.2	1.69	10.46
27	275,900	3518	65	3453	79.9	84.3	54.6	4.19	3.29	94.2	1.72	10.66
28	274,780	3512	67	3445	79.8	82.5	54.1	4.16	3.25	91.6	1.69	10.20
29	329,200	3501	69	3432	95.9	82.9	54.9	4.19	3.25	92.3	1.68	10.22
30	275,400	3510	70	3440	80.1	82.5	54.9	4.18	3.24	91.7	1.67	10.09
31	275,800	3508	72	3,436	80.3	83.8	55.1	4.19	3.27	93.5	1.70	10.43
AVG	287,881	3,502	67	3,434	83.8	83.9	55.1	4.15	3.27	93.1	1.69	10.39

Total 8,924,300

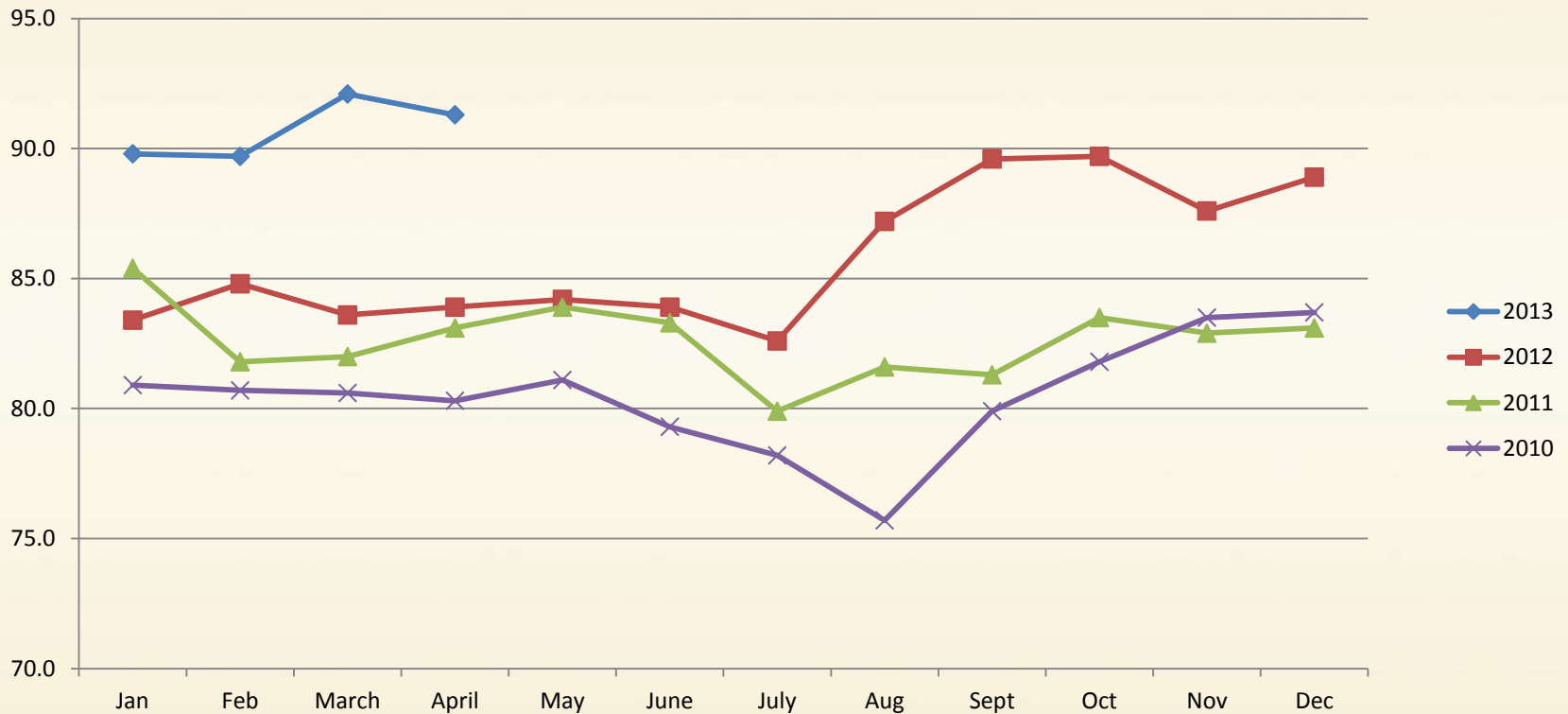
Compare data across month/years

ECM



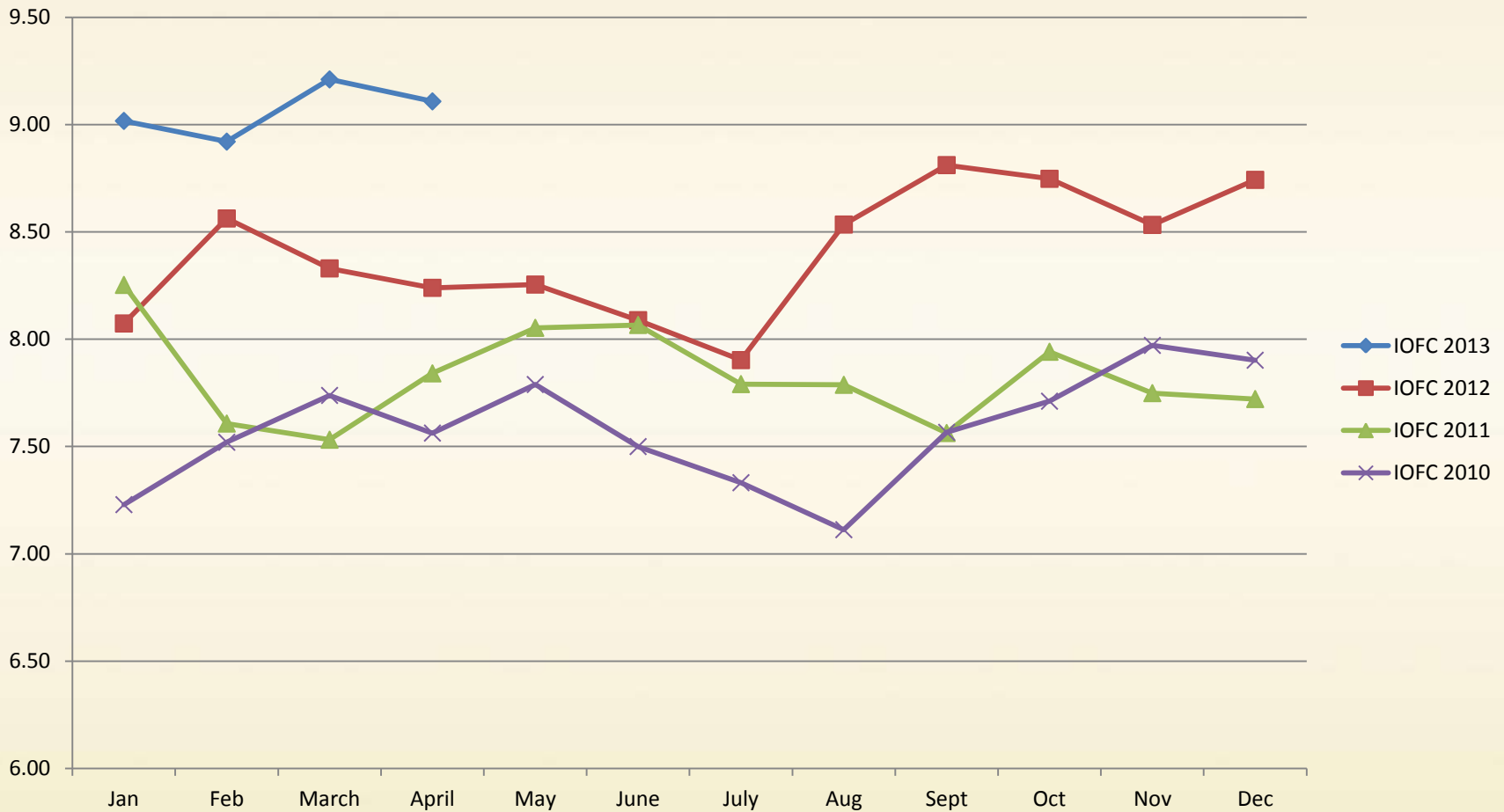
Compare data across month/years

Money Corrected Milk™



Compare data across month/years

IOFC



Making numbers work for you!

- You need to have accurate DMI's - Feeding software
- Help your clients get started
- Designate who will capture the data
- Routinely share information across key personnel
- Develop meaningful reports



Questions?